



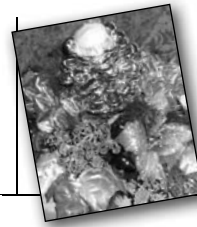
**Butler-Tarkington Is on Twitter, Are You?**

PAGE 6



**Andy Warhol Enterprises at the IMA Until Jan. 2<sup>nd</sup>**

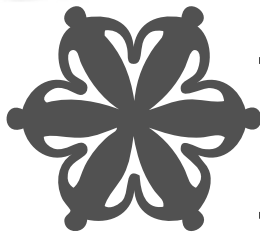
PAGE 8



**Finish Off Your Christmas List at Local Shops**

PAGE 9

the news of our neighborhood • indianapolis, indiana



# Butler-Tarkington

NOVEMBER & DECEMBER 2010

www.butlertarkington.org

VOL. 55, NO. 6

## Kids Ink Draws Book Lovers from Near & Far

*Local bookstore at 5619 North Illinois Street has fueled the imagination of neighborhood children for more than 25 years.*

MARILYN PORTER  
CONTRIBUTOR

Every other Wednesday morning 3-1/2 year old Edie Rees has a date with her next-door neighbor, Peg Sharples. Usually they walk—sometimes with Edie pushing her stroller and other times riding while Peg does the pushing. Their destination? The Kids Ink children's bookstore's story and craft time.

This morning the story theme is bears. Three little toddlers Edie, Michael Tharber and Delaney Thompson, accompanied by a nanny and a grandmother, sit on a colorful quilt while story teller Kathy Poole warms them up with the timeless "we're going on a bear hunt" story. This is followed by two picture books about bears—both geared to the two-to-five age level of the children. The children top off the 1/2 hour with a simple craft of furry bear cutouts. The brown "fur" that sticks to the glue is actually used coffee grounds provided by nearby Starbucks.

Even as our public libraries are being forced to cut hours, staff and story hours, we in the Butler Tarkington neighborhood are fortunate to have this wonderful children's book store in our midst. Staff members Terri, Judy, and



CALVIN PORTER

Storyteller Kathy Poole has everyone's full attention as they go on a bear hunt.

Kathy take turns as story teller. Parents are requested to register ahead of time (255-2598), since space is limited to ten children. Usual dates are Wednesday, Thursday and Friday mornings on alternating weeks, from 9:30 to 10:00. Because of the holidays, November dates are limited to the 17<sup>th</sup>, 18<sup>th</sup> and 19<sup>th</sup>, and December 1<sup>st</sup>, 2<sup>nd</sup> and 3<sup>rd</sup>.

Now in its 25<sup>th</sup> year, Kids Ink, 5619 N. Illinois, stocks a large supply of children's books and educational toys. From such classics as Winnie the Pooh, to newer "chapter books" for older children, you can always find something appropriate for your particular kid. If you need some suggestions, owner Shirley Mullin or one

SEE KIDS INK | PAGE 5

## ANOTHER SUCCESSFUL BTNA ANNUAL MEETING

JOHN BARTH  
BTNA BOARD MEMBER

On October 11<sup>th</sup> over 50 neighbors gathered to participate in the BTNA Annual Meeting held at the Martin Luther King Community Center. Beyond our neighbors in the Butler-Tarkington neighborhood, the meeting attracted

SEE ANNUAL MEETING | PAGE 12

## BUTLER BRIEFS

### **Butler Dean Is One of Indy's 'Most Influential'**

The *Indianapolis Business Journal* has named Ena Shelley, dean of Butler University's College of Education (COE), to its list of Most Influential Women of 2010. The list recognizes business women from Indianapolis' public and private sectors with reputations for experience, integrity and leadership in their fields.



SHELLEY

Indianapolis Public Schools Superintendent Eugene White, a Butler Trustee, nominated Shelley. The nomination cited Shelley's work to promote effective teaching and early childhood education, as well as the multiple partnerships she has helped foster between Butler COE and Central Indiana schools.

### **Blue II Makes Top 11 Cutest Mascot List**

Butler's mascot, Blue II, ranks No. 2 in the *People* magazine list of the Top 11 cutest mascots.

Blue II finished behind Uga VIII, the University of Georgia's new English bulldog, but ahead of Yale's Handsome Dan XVII, UNC-Asheville's Rocky I, a Victorian bulldog and a menagerie of other breeds of dogs. See [www.peoplepets.com/photos/cute/the-cutest-live-college-mascots/1](http://www.peoplepets.com/photos/cute/the-cutest-live-college-mascots/1) for a complete list.

### **Men's Basketball Team Opens Season with Win Over Marian**

Junior Shelvin Mack scored 20 points to lead Butler to an 83-54 victory over visiting Marian in the season-opener for the Bulldogs at Hinkle Fieldhouse on Saturday, Nov. 13. All 14 Butler players saw action in the win and 12 cracked the scoring column.

"I thought there were a lot of positives for a first game, but obviously we're going to have to do some things better," said Butler head coach Brad Stevens after the game. "The way we defended in the second half was pretty good.... There's lots to build on."

the president's message

## President Bloede Updates Neighborhood on BTNA Progress

NEIL BLOEDE  
BTNA PRESIDENT

Hello neighbor. Fall is in full swing and we are approaching the end of the year. I want to wish everyone a happy holiday season and safe travels. The Butler Tarkington Neighborhood Association (BTNA) has been very busy the last few months. I want to give you some brief highlights on what we have been working on for you.

### **BTNA NIGHT WITH BUTLER BASKETBALL**

BTNA has collaborated with the Butler University Athletic Department to bring current 2010 and new 2011 dues paying members an opportunity to mingle with neighbors and attend a Butler basketball game for a discounted price. BTNA will host a group event at Hinkle Fieldhouse on Friday, January 21<sup>st</sup> for Butler v. Wisconsin Green Bay Men's Basketball game. Adult tickets will be discounted to \$12, and youth tickets will be \$7. There will be a pre-game reception in Hinkle's West Gym to meet with friends and neighbors and get ready to cheer on the Bulldogs. Hink, the Butler mascot, may even attend for a pregame photo with Butler fans. In addition, BTNA and Butler will be offering discounted ticket prices to BTNA members when the Butler Women's Basketball team takes on Wisconsin Milwaukee on Saturday, January 29<sup>th</sup>. Adult ticket prices for the Women's game are \$5 and youth prices are \$3.

BTNA is excited to be able to offer this unique opportunity to attend a game of the NCAA Championship Runner-Up Butler Bulldogs at a discounted rate to our membership. I want to encourage our current membership to take advantage of this opportunity and to renew their 2011 membership.

I also want to encourage Butler-Tarkington residents to join BTNA for 2011 and take advantage of this discounted offer. The savings in ticket prices alone makes joining BTNA a win-win.

Complete ticket orders must be received by BTNA no later than January 5, 2011. You can find an order form within this newsletter. Please use the membership envelope in the newsletter to submit your ticket application and 2011 membership. Tickets MUST be picked up at the BTNA meeting on January 10, 2011. Meetings are held at the Martin Luther King Jr.

Community Center (40<sup>th</sup> & Illinois St.) at 7:00 p.m.

### **BTNA ANNUAL MEETING**

A crowd of nearly 50 residents attended the recent BTNA Annual Meeting, which featured the long-awaited and much anticipated documentary about the history of BTNA. BTNA also introduced three new residents that will be joining the BTNA Board of Directors. The new members are Ann Foster, Jeremy Stewart, and Edward Merchant. These talented individuals are eager to work hard to represent BTNA and improve the quality of life in Butler-Tarkington. Please look for fuller coverage of the meeting in an article by John Barth in this issue.

### **ODDS & ENDS**

Residents always send me their thoughts and concerns and I would like to share a few valuable ones with you. I was recently reminded that it is each of our responsibilities to keep our curbs and gutters clean. I know that this can be a tough job during the fall with all of the leaves gathering in the street, but it is very important to keep the gutter and drains clear in front of your house to

SEE PRESIDENT | PAGE 5



BLOEDE

# Holiday Gardening Tips from Master Gardener

*Get your garden ready for the winter months with these tips from BTNA's own Master Gardener.*

LARRY FITZGERALD  
BTNA BOARD MEMBER

It seems like we were just talking about spring planting and here we are at the end of the season, thinking about the holidays and winter. Gardening slows down but does not stop. Before you know it, the spring gardening books will be out again. For now we will concentrate on the holidays and winter preparation.

*Holiday greenery.* Wreaths and other greenery do best in cool locations. Avoid areas close to registers or heat sources. Do not put greenery between storm door and interior doors as they tend to dry out faster. Mist the back of the greenery every few days to keep moist. Live Christmas trees should be kept in a container that holds water to prolong freshness. It's also a great time to start an amaryllis for holiday blooming. They

can be found in most big box stores now and make great Christmas gifts. Poinsettias are plentiful in a wide variety of colors. Check flowers for whiteflies and the soil for gnats.

*Annuals.* If you bring annuals inside for the winter, pinch back long shoots

post for spring gardening. The winter weather should kill any pests and aid in decomposing and enriching your soil for spring planting.

*Perennials.* As soon as ground is frozen, mulch around plants with straw or evergreen branches or other light material. Remove all fallen leaves and dead stems from the perennials before applying the mulch.

*Roses.* Tea roses should be cut back to 18". After the ground freezes, cover bushes with 12" mounds of soil or leaves or a rose cone to protect over the winter.

*Shrubs.* Make sure shrubs are well watered before the hard freeze sets in. This is especially important this year because of the summer's dry weather.

*Trees.* Mulch around trees. Keep the mulch one foot from the tree base to discourage voles from feeding on the bark.

*Our bird friends.* Keep feeders full and water available, and you will be rewarded with visits by our feathered friends.

Stay warm this winter and enjoy the beauty nature brings to Indiana with the changing of the seasons.

*Stay warm this winter and enjoy the beauty nature brings to Indiana with the changing of the seasons.*

to force branching. Be stingy with water to prevent rotting. Water only after soil dries out. Keep plants close to natural light sources to encourage blooming.

Bulbs, Corms, Tubers, Rhizomes can still be planted before the deep freeze sets in.

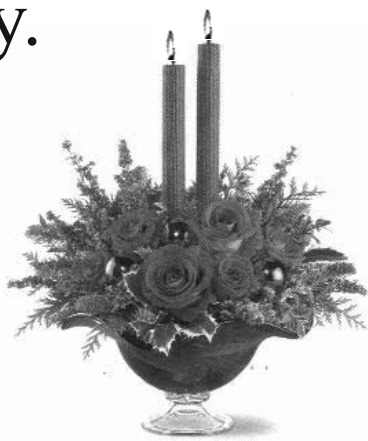
*Vegetable gardening.* Clean up dead plants and apply a layer of com-

give joy.

Christmas is  
Saturday,  
December 25

Crimson  
Christmas  
Bouquet

\$61<sup>99</sup>



Bring splendor to the holiday table with a centerpiece that is truly a work of art – ravishing flowers in a magnificent hand-blown art glass bowl that will be cherished for years. For nationwide same-day delivery of this gift of Christmas, call or visit our shop.

**SIERRA FLOWERS**

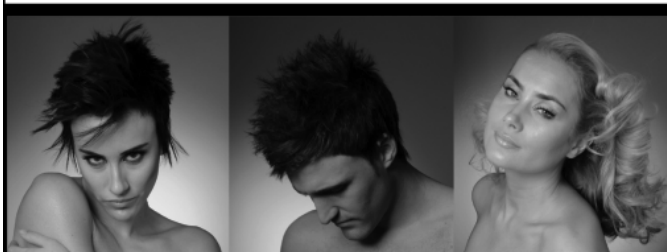
YOUR NEIGHBORHOOD FLORIST

3801 N. ILLINOIS ST.

925-4585



SALON



**NOW OPEN**

4907 North Pennsylvania

Indianapolis, IN 46205

317-924-4907

dlsalon.com

# New Rules for Parking On & Near Campus

**BENJAMIN HUNTER**  
BUTLER UNIVERSITY PUBLIC SAFETY DIRECTOR

Parking on a college campus can be a challenge. At Butler University, we are continually seeking ways to mitigate that challenge through improvements to our parking plan and policies, as well as communication to both the campus community and residents of the Butler-Tarkington neighborhood. Other improvements to campus parking include increased enforcement of parking policies, an internal Parking Committee to explore parking changes and enhanced signage designating parking zones.

Most recently, campus streets—including those touching University property—were zoned to better control parking capacity. This change came about through much discussion among the University Parking Committee, Indianapolis Department of Public Works, city planners and members of the board of public works, and members of the Butler-Tarkington Neighborhood Associa-



HUNTER

tion (BTNA).

In 1989, Butler entered a covenant to operate a stickered university-parking system. This academic year, the University's parking stickers use letter(s)—A-B-C-G-HV—to denote the areas in which faculty, staff, students and visitors may park. The University's parking services department will monitor these zones during this academic year and, if needed, make adjustments. Because it is a fee-based parking system, faculty,

staff and students are required to purchase a parking sticker in order to park on campus. What these fees are used for is one of the primary questions asked by the campus community. The parking registration fees are utilized to make improvements to Butler's parking lots, parking signage and crosswalk installations, as well as traffic and enforcement supplies.

Stronger parking enforcement has occurred in the Butler-Tarkington area for members of the University who may be tempted to park off-campus on residential streets. To guide University members and better inform them, parking cita-

tions now include an informational sheet directing constituents to Butler's parking policies on the University's public safety webpage.

Even though Butler continues to work with the residents of BTNA, challenges that come with a successful university being located in a great neighborhood occasionally arise. Butler and the City of Indianapolis have taken a more proactive role in providing operational support for major events, such as sports events and the many runs/walks that utilize Butler's campus and affect the Butler-Tarkington neighborhood. This support includes increased traffic control during events and directions for traffic and parking prior to the event via the University webpage or, for events where visitors must register to attend, direct emails.

Butler-Tarkington residents are encouraged to visit Butler's public safety webpage ([www.butler.edu/public-safety](http://www.butler.edu/public-safety)) to view our current parking policies and map. The public safety department welcomes any questions, concerns or suggestions as we continue to improve Butler's parking plan and policies. Please send feedback to [bdhunter@butler.edu](mailto:bdhunter@butler.edu).

## *A Caring Place Adult Day Services*

Safe, daytime activity for adults with cognitive or physical impairment.

Transportation available and nurses on staff.

466-0015 | 4609 N. Capitol Ave.

Services of Catholic Charities Indianapolis

**Tax Matters**  
• Personal & Business  
• Not-For-Profit  
**Family Accounting**

**4631 Boulevard Place**  
**Indianapolis IN 46208**

**LUCY RIEGEL CPA**

**Phone 923-8021**  
**FAX 923-8070**  
**Home 283-6755**

**Fairview Presbyterian Church**  
4609 N. Capitol

Sunday Worship 8:45 & 11 AM  
Christian Development for all Ages 9:45

Early Childhood, Music Studios, & Adult Day Care  
Programs available

251-2245

[www.fairviewpresbyterian.org](http://www.fairviewpresbyterian.org)

Faith, Family, Fellowship...the Fairview experience

# Treeo

"You, Me & the Trees"



Call today for a free estimate  
on all your tree needs at  
**254-0001.**

# Kids Ink: 25 Years of Business on Illinois St.

**KIDS INK FROM PAGE 1**

of the helpful staff members (who I believe must have read every book in the store!) can always lead you in the right direction.

It is also exciting to meet the authors of the books you are purchasing, and Kids Ink frequently has them available for book signings. On Monday, November 15<sup>th</sup>, authors Avi and Sarah Weeks will be signing copies of their books from 6:30 to 7:30 p.m. Sarah Weeks' books include *Jumping the Scratch*, *Follow the Moon*, *I'm a Pig*, *Mac and Cheese* and *So.B.It*. Avi Weeks has written *Crispin*, *True Confessions of Charlotte Doyle*, *Windcatcher*, *Beginning*, *a Muddle* and *An End*, *End of the Beginning*

and *Secret School*.

From 4:00 to 5:00 p.m. on Wednesday, November 17<sup>th</sup> author Pam Munoz Ryan will sign copies of her books, which include *When Marian Sang*, *One Hundred Is a Family*, *Paint the Wind*, *The Dreamer*, *Amelia* and *Eleanor Go for a Ride*, *Becoming Naomi Leon*, *Riding Freedom* and *Esperanza Rising*.

Store hours are from 10:00 a.m. to 8:00 p.m. Monday through Thursday, 10:00 a.m. to 6:00 p.m. on Friday, and Saturday, and 1:00 p.m. to 5:00 p.m. on Sunday. Kids Ink will also be participating in the 56<sup>th</sup> & Illinois Holiday Open House on Thursday evening December 2<sup>nd</sup>, and Friday and Saturday, December 3<sup>rd</sup> and 4<sup>th</sup>.

## YOU TOO CAN WRITE FOR THE BUTLER-TARKINGTON

The Butler-Tarkington newsletter needs your storytelling skills. We are looking for writing contributors to tell the stories of folks who live in our neighborhood, the businesses housed here, and events of note to our residents. The committee meets once every two months for one hour to brainstorm ideas for upcoming issues, assign tasks for the next issue, and set deadlines for submission. Then writers are on their own—unless they need some assistance.

This is a great way to get to know more about the Butler-Tarkington neighborhood and to become acquainted with more of your neighbors. And it's a fun creative outlet (for those inclined this way), without consuming too much of that precious personal time. If you're interested please contact Carol Caldwell at [carol61244@att.net](mailto:carol61244@att.net).

We also want to thank some past contributors, namely Betty Griffith and Adam & Krista Jones, who have worked with us in the past but are retiring from newsletter work. Adam & Krista and their young son are leaving Indianapolis early next year with an eventual targeted location of Bosnia. We hope to follow their journey through periodic articles in our neighborhood newsletter.

Welcome to Jennifer Davis Eastwick, who is joining our ranks. Jennifer will be writing and co-editing future issues of the newsletter.

Lastly, thanks to all our readers—keep it happening. And please consider volunteering as a future contributor.

## BUTLER UNIVERSITY



# BCAS

**Butler Community Arts School**

Private instrumental lessons for all ages taught by Butler students on Butler's campus.

**Piano, Voice, Strings, Woodwinds, Brass, Percussion, Guitar, Harp, Music Theory and Composition**

GROUP CLASSES:

- Music for Little Mozarts  
*(group piano for ages 5-6)*
- Steel Drum ensemble *(ages 11 and up)*
- Butler Children's Orchestra *(ages 7-12)*
- Butler Youth Jazz Orchestra *(ages 14-18)*

[www.butler.edu/BCAS](http://www.butler.edu/BCAS)

Need-based scholarships available. For more information, call (317) 940-5500 [BCAS@butler.edu](mailto:BCAS@butler.edu)



## President's Update

**PRESIDENT FROM PAGE 2**

prevent any street flooding and road damage. Moreover, when we all do our part to maintain the visible beauty of our neighborhood it improves vibrancy of Butler-Tarkington.

In an effort to help us all keep our yards and streets free of falling leaves, the city is once again offering an expanded pick-up program for leaf collection. Beginning November 8<sup>th</sup> and running through December 3<sup>rd</sup>, DPW will collect up to 30 bags

of leaves each week free of charge.

In hand collection areas, residents may set out up to 10 bags of leaves each week. DPW asks that the bagged leaves be clearly separate from any other trash bags set out on your regularly scheduled pick up day. As an added benefit to this increased pick up, DPW composts the collected leaves and makes the compost available free of charge. As a final note, it is illegal to burn leaves in Marion County.

# Butler-Tarkington Is on Twitter, Are You?

*This guide will get you “following” and “tweeting” on Twitter today!*

---

CHRIS W. COTTERILL  
BTNA BOARD MEMBER

---

The Butler-Tarkington community is tweeting more than ever before. With a few simple steps you can get these tweets so you know what's going on in our neighborhood and beyond.

## TWITTER 101

Despite all this activity from a chirpy gaggle of our fellow neighbors, most people aren't using Twitter. In fact, while a lot of us have heard of Twitter, most people don't know what it is.

Twitter allows people to send and receive short messages, called “tweets.” Tweets are limited to 140 characters; so keep it short and sweet. (If you're counting, the last two sentences came in at 141 characters.) The required brevity of each tweet actually makes Twitter easy to use, and Tweets can be interesting.

It's easiest to understand if you just visit a Twitter account online. Go ahead and make your first visit [www.twitter.com/Butler\\_Tark](http://www.twitter.com/Butler_Tark). Here, you'll find the official Twitter account for the Butler Tarkington Neighborhood Association (BTNA). We post information there about a variety of things going on in our neighborhood.

The BTNA Twitter account is just one of more than 75 million accounts, each representing a person or organization that has something to “tweet” about

or that wants to see what other people are “tweeting” about. You can join by creating your own free Twitter account. Visit [www.twitter.com/signup](http://www.twitter.com/signup), enter your name, a username, your email address, a password, and click “Create an Account.” It's that easy.

Now you can search for users and subscribe to their tweets. (In Twitter parlance, you do not subscribe, you “follow.”) If you are signed in, just click the “Follow” button to follow a user's tweets. All tweets from the users you are following will be collected automatically on your Twitter account page, which you (and anyone else in the world if you don't change the settings in Twitter) can access at [www.twitter.com/your\\_username](http://www.twitter.com/your_username).

You may access your Twitter account from a variety of other devices, including a blackberry or iPhone. As an iPhone user myself, I use the free Twitter app, which you can download from iTunes.

## TWEETS FROM BUTLER UNIVERSITY

Every Twitter account is represented by an @ sign followed by the username and accessible at [www.twitter.com/username](http://www.twitter.com/username).

Check out tweets at @butleru, the University's official Twitter account, or get campus safety updates and tips from the Butler University Police Chief (@BU-policeChief). The voice of Butler University, the *Butler Collegian*, also tweets at @butlercollegian.

Butler's athletics department has an official page at @HinktheBUDog, or you can follow basketball coach Brad Stevens (@BUCoachStevens), football coach Chris Davis (@BUFBCoachDavis) or The Dawg Pound, Butler's student section at sporting events (@BUDawg-Pound). Even Blue, Butler's official mascot, has an account (@ButlerBlue2).

For a complete list of official Butler University see [www.butler.edu/newsroom/resources/social-networks/recognized-accounts](http://www.butler.edu/newsroom/resources/social-networks/recognized-accounts).

## TWEETS AROUND BUTLER-TARKINGTON & BEYOND

Beyond Butler University, you'll find that The Flying Cupcake (@flyncupcake) tweets. And, just outside our neighborhood, you can get the latest on the Riviera Club (@TheRivi), BroadRipple (@Broad\_Ripple), Meridian Kessler (@MeridianKessler), and the Indianapolis Museum of Art (@imamuseum).

The *Indianapolis Star* has a number of twitter accounts covering news, sports, opinion, and more, all of which are listed at [www.indystar.com/section/twitter](http://www.indystar.com/section/twitter). The *Indianapolis Business Journal* also has twitter feeds at [www.ijb.com/twitter](http://www.ijb.com/twitter).

Mayor Greg Ballard (@MayorBallard), Governor Mitch Daniels (@INGovernor), and President Obama (@whitehouse) are the only elected officials representing our neighborhood with Twitter accounts so far, but more are sure to follow with the elections recently concluded and new folks taking office. You will also find a variety of organizations tweeting, including the Indianapolis Convention & Visitor's Association (@visitIndy), Sustain Indy (@Sustainindy), and Indy Connect - Central Indiana's Transportation Initiative (@IndyConnect).

Our local sports teams are on Twitter, including the Pacers (@indianapacers) and the Indians (@indyindians). And, many non-profit organizations use Twitter, including the Arts Council of Indy (@artscouncilindy) and Citizens Energy Group (@citizensenergy). Even for-profit companies, like Eli Lilly & Company (@LillyPad) are on Twitter.

## FINDING YOUR FAVORITES

In addition to all these “official” twitter accounts, you can follow millions of individuals with Twitter accounts. Just visit [www.tweeting-athletes.com](http://www.tweeting-athletes.com) to find your favorite athlete who tweets, [www.whopoliticianstweet.com](http://www.whopoliticianstweet.com) to find a politician who tweets, or [www.celebritytweet.com](http://www.celebritytweet.com) or [www.celebswhotwitter.com](http://www.celebswhotwitter.com) to

SEE TWITTER | PAGE 7



COTTERILL

twitter



# With Twitter, "Following" Is Encouraged

**TWITTER FROM PAGE 6**  
find your favorite celebrity who tweets. At [www.twitaholic.com](http://www.twitaholic.com), you can find the top 100 "Twitterholics" ranked according to the highest number of followers. Number one on the list is Lady Gaga (@ladygaga) with 6,873,633 followers.

## YOU DON'T HAVE TO TWEET, BUT IF YOU WANT TO....

Most of Twitter's users are just following others, and not tweeting. But, if you are so inclined, you can tweet your own message, or just retweet someone else's message, which just tweets someone else's message on your account for your own followers to see. For more information about how to tweet, just google "how to tweet" and you'll find information on the subject.

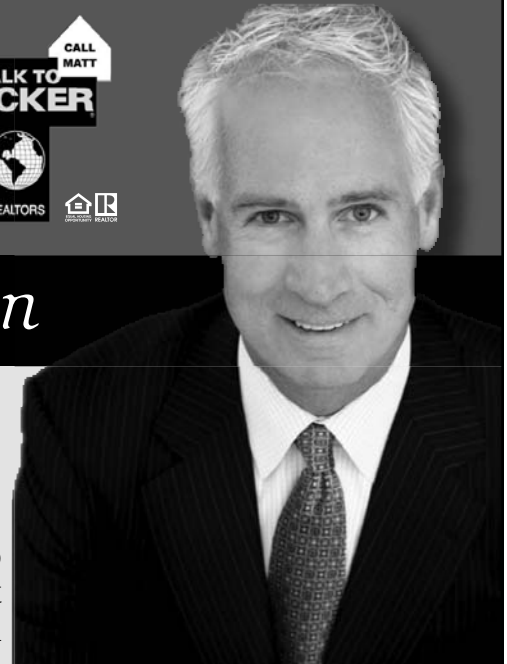
If you're like me, following others who tweet is more than enough. Thankfully, there are those who do tweet some useful information. With a bit of exploration, you are sure to find many resources you want to follow.



Here's BTNA's Twitter page. Just visit the page today to see the latest "tweets" from BTNA. With your own Twitter account, you can "follow" BTNA.



## Thinking of Buying or Selling in the Butler Tarkington Area?



# CALL MATT *McLaughlin*

## Butler Tarkington Resident

F. C. TUCKER COMPANY, INC. 317.580.7826  
[www.callmatt.net](http://www.callmatt.net)  
[mmcl@talktotucker.com](mailto:mmcl@talktotucker.com)

# Andy Warhol Enterprises at the IMA Until Jan. 2<sup>nd</sup>

Silkscreens, sculptures and more by one of the most iconic artists of the 20<sup>th</sup> century are now on view at the Indianapolis Museum of Art. Andy Warhol Enterprises takes a look at the artist's career beyond the most recognizable pieces, demonstrating the enormous diversity of Warhol's significant body of work. The exhibition features more than 150 works in a wide range of media, including paintings, drawings, sculpture, film and video, as well as an extensive selection of archival materials. The exhibition opened in October and will be on view in the IMA's Allen Whitehill Clowes special exhibition gallery through Jan. 2, 2011.

To help manage his highly successful career as a commercial illustrator, Warhol formed Andy Warhol Enterprises, Inc. in 1957 (inspiration for the exhibition's name). The aes-



thetic approach, techniques and business acumen he developed during that time informed his artistic production from the early 1960s until his death in 1987. Throughout his career as an artist, filmmaker, "Factory" director, band manager, magazine publisher and television entrepreneur, Warhol intentionally blurred the line between art and commerce, slyly calling into question the very values of art in such statements as, "Good business is the best art."

Andy Warhol Enterprises looks beyond the artist's most well-known works of Pop art, which brought him fame,

money and success.

"Warhol exhibitions tend to focus narrowly on the paintings of just one decade of the artist's career—the Sixties," says Sarah Urist Green, associate curator of contemporary art at the IMA. "While that was a hugely important and prolific time period for Warhol, it is much more revealing and exciting to view his landmark silkscreen paintings in the context of his larger body of work."

The exhibition examines works from each of the major decades of Warhol's artistic

career, from his commercial illustrations and shop window designs of the 1950s, to his groundbreaking paintings and sculptures of consumer products and celebrities of the 1960s, to his commissioned portraiture and entrepreneurial ventures into various media such as magazines, film and TV in the 1970s and 1980s.

Andy Warhol Enterprises is made possible by support from the PNC Foundation. Tickets for the exhibition are \$14 for the public, free for IMA members and free for children age 6 and under.





**Todd Foushee**  
Employee Benefits  
Consultant

---

*"Offering assistance with Health Care Reform  
and employee benefit consulting."*

317.254.1600www.apexbg.com



**STURGILL LAW FIRM**

ATTORNEYS AT LAW

The Sturgill Law Firm primarily represents individuals & small to medium businesses regarding Business law from start to finish, which includes corporate formation, contracts, labor & employment law, & collections. It also helps in Estate and business succession planning.

**Phone: (317) 722-0104**  
**Fax: (317) 722-0105**  
**E-mail: jonnysterg@msn.com**

**7071 WARWICK ROAD**  
**INDIANAPOLIS, INDIANA 46220**



**MERIDIAN STREET**  
United Methodist Church

---

*"Living a faith for today in fellowship and service."*

---

**5500 N. Meridian Street**

**Sunday Worship**  
**9:00 and 10:30 am**

Sunday School, Disciple Kids, and Child Care

•

**Morning at Meridian:**  
**Midweek pause for inspiration**

Fifteen Minute Service in the Chapel  
Wednesday Mornings at 7:30 am

•

Previously recorded worship service on WICR 88.7 FM  
11:00 am on Sunday

[www.msumc.org](http://www.msumc.org)**253-3237**

# Finish Off Your Christmas List at Local Shops

CAROL CALDWELL & JENNIFER DAVIS EASTWICK  
 EDITOR IN CHIEF & CONTRIBUTOR

For those of you who are starting to get a bit panicky about Christmas shopping, we've come up with a Butler-Tarkington gift guide. We're going to point out a few nice items that may help you finish your shopping, almost without leaving home. Okay, you do have to leave your house, but you'll just be going around the corner, so to speak.

Talk about your one-stop gift buying store! That's the CVS located at 119 W. 56<sup>th</sup> Street. Here you'll find foot spas, mini indoor water fountains, massage and aromatherapy supplies, as well as lotion and toiletry kits. In addition to all sorts of pampering supplies, you can choose from popular toys, winter wear, baby supplies and a huge collection of gift cards. CVS offers a wide selection of gift ideas, most of which are \$50.00 or less.

If you're thinking this is a pewter piggy bank, you'd be wrong. Wrong, that it's pewter. The bank is part of the Juliska ceramic decorative items that are an extension of the dinnerware line carried at Charles Mayer & Company, 5629 N. Illinois. The ceramic pieces come in various shapes and sizes, each nicely packaged in its own box, and a portion of each sale goes to Save the Children. Prices are \$20 to \$50. The piggybank is \$48.

One of the hot items this season at Ace Hardware. 3833



N. Illinois is "Eden Pure" quartz infrared portable heater. It heats evenly, doesn't burn oxygen or reduce humidity and it doesn't get hot enough to start a fire. Approximately 12" wide, 18" high and 24" deep, this small unit will heat up to 1,000 sq. ft. Ordinarily selling for \$397, Ace is offering it now for \$297.

French sparkling wine (called Crement) can add to your holiday festivities either as a hostess gift, a romantic gesture, or for toasting the family gathered around your dinner table. French sparkling wine is not champagne, but is made like champagne. It may come from Loire, Burgundy or Alsace,

SEE GIFTS | PAGE 11

G. THRAPP JEWELERS

INTRODUCING A  
 NATIVE INDIANAPOLIS DESIGNER

samanthalouise  
 J E W E L R Y

5609 NORTH ILLINOIS ST. • INDIANAPOLIS, IN • 46208  
 317.255.5555 • 800.866.0955 • www.gthrapp.com  
 One Block West of 56th & Meridian

# Using the Library Electronically

JON BARNES & GLENN HALBERSTADT  
IMCPL

You don't have to visit the Indianapolis-Marion County Public Library in person to take advantage of the many services it now provides. With IMCPL's web branch, the Library is always open! Such "traditional" online services as viewing IMCPL's catalog of over two million items, placing holds on materials, and accessing over 60 reliable and accurate online reference databases have been expanded. This also includes the ability to download audiobooks and e-books and access the Library's electronic services on your mobile device. The beauty of these and all other IMCPL services is...they are all free!

With IMCPL Mobile, you can visit the Library while on the go. Search the Library's catalog and place requests for books and materials. Or check your borrower record, the location and hours of any IMCPL branch, and upcoming events. To access IMCPL Mobile, users can open a web browser on their personal devices and type in [mobile.imcpl.org](http://mobile.imcpl.org) or [www.imcpl.org/m](http://www.imcpl.org/m).

Library patrons can sign up to receive via e-mail a monthly customized newsletter from IMCPL. Choose to receive information on new titles, library events at your local branch, important news announcements, library blogs and more. Just go to the homepage, click on Build Your Own Newsletter, and log in. The newsletter will be delivered to you around the 15<sup>th</sup> of each month.

On the library's homepage you can open the Reader's Connection blog and comment on a book review—or click on the Share a Review button and review a book of your own choosing. There's also a Kids' Blog at [www.imcpl.org/kids/index.html](http://www.imcpl.org/kids/index.html) and a Teen Scene blog at [www.imcpl.org/teenscene/](http://www.imcpl.org/teenscene/).

Virtual reference help is available through Ask-a-Librarian 24 hours a day. Get Live Homework Help through online chat with a tutor every day from 2:00 p.m. to 10 p.m. Both services are available through IMCPL's homepage.

If you're interested in downloading materials, go to the lower left portion of IMCPL's homepage ([www.imcpl.org](http://www.imcpl.org)) and click on Downloadables. You'll find options for downloading either audiobooks or e-books. There are thousands of titles that can be selected, and the Library is continuously adding new titles. The Guided Tour and Quick Start Guide can help you begin the process of downloading needed software and establishing an account. You can browse the offerings, click on a genre of interest, and once you've heard or read a title, give it your personal rating for others to see.

Other valuable services available online include the new Powerspeak world language service. Learn or brush up on Spanish, English (ESL), French, German, or Mandarin with this fun and easy to use online resource.

IMCPL's Digital Library collection has recently added over one thousand photographs, logbooks, audio and video clips,



Dick Gage, demon maker of buckets, left little doubt as to who was the best man in the field of ten likely lads. His popularity had been tested on a smaller scale upon a number of occasions. His election to the cherished position of honorary basketball captain was easily attained, and it was mainly his spark that sent the team crashing through for a sectional championship. The voting masses knew what the score was this year. There is not a finer fellow in school. Left to right, top: Kenny Smoek, Walt Freihofer, Fred Maynard, Sigmar Muhl. Center: Pat West, Uglyman Dick Gage, Dave Savidge. Lower: Joe Shedron, Kurt Vonnegut, Vic Jose.

UGLYMAN

3-dimensional objects and miscellaneous items from the Indianapolis Firefighters Museum in celebration of the Indianapolis Fire Department's 150<sup>th</sup> anniversary. Other historic collections available in IMCPL's Digital Library collection include Shortridge High School yearbooks from 1898 to 1968, the Indianapolis Postcards collection, artifacts from The Children's Museum, the May Wright Sewall Papers, the World War One Poster collection, the Free Soil Banner newspaper, programs from English's Opera House, and actual recordings of poems read by beloved Hoosier poet James Whitcomb Riley.

## HAARBYE

**RESTORATION & REPAIR**

**PLASTER REPAIR**

*flat-ornamental*

**SINCE 1983**

**370-7054**

# Great Holiday Gifts Are Available Nearby

## GIFTS FROM PAGE 9

and the quality is a cut-above most California champagnes. A bottle of Cremen de Loire is \$17 at the 21st Amendment Liquor Store, 5561 N. Illinois.

A dashing but comfy bit of attire is always a welcome gift for any woman on your shopping list. Black and grey (always big in winter) combine in this patterned trio, sweaters in striped patterns and a small animal print for

the scarf. This outfit, with pieces priced from \$20 to \$150, are typical of apparel you'll find at the Secret Ingredient, 5631 N. Illinois. Fake fur is also coming on strong this year. We saw delightful fur jackets, vests and sweaters with fake fur trim, and other fluffy items at the Secret Ingredient.

G. Thrapp Jewelers, located at 56<sup>th</sup> and Illinois, has an array of beautiful gift possibilities, with varied price points. In addition to the unique selection of fine jewelry for which they're well known, you'll find gorgeous pewter serving ware, paraben-free soy candles, stunning picture frames and an assortment of Hacyon Days enamel boxes. And who doesn't love David Yurman jewelry? His pieces are chunky and stylish, with just the right amount of trendy



Mittens from recycled sweaters and lined with polar fleece are sure to keep hands warm. These are a truly unique gift since no two are alike. One size fits all and \$50 a pair at the Oxford Shop, 5607 N. Illinois.




worked into each piece to make it stand out.

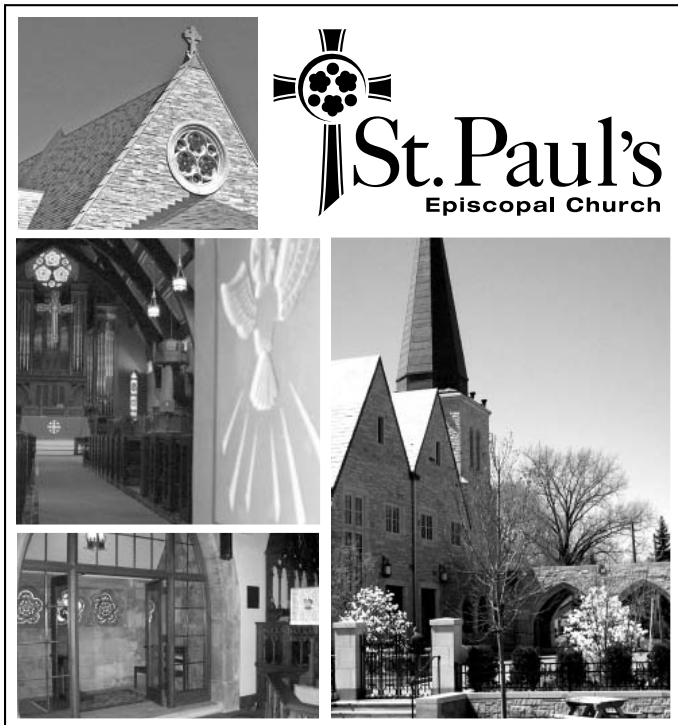
must-have decorations for your upcoming festivities.

Thrapp also carries an original line of jewelry by a woman who was born and raised in Indianapolis. Samantha Louise Designs offer a wide variety of beautiful, hand-crafted jewelry. G. Thrapp offers a lovely assortment of exquisite gifts and

So what are you waiting for? Shop 'til you drop at our home-grown Butler-Tarkington specialties, then stop for a nice steamy latte at Starbucks, or have a delightful meal at Oh! Yum. If it's not too cold, you can probably walk home.



**St. Paul's**  
Episcopal Church



6050 North Meridian • 253.1277 • [www.stpaulsindy.org](http://www.stpaulsindy.org)  
**SUNDAY** 7:45, 9:00 & 11:15 a.m. • 6:00 p.m.  
**WEDNESDAY** 8:00 a.m.



Debbie Harrington, Sierra Flowers, expects silver to be especially popular this holiday season. With that in mind, she created this centerpiece, featuring lots of silver along with splashes of red & white.

# BTNA Documentary Debuted at Annual Meeting

ANNUAL MEETING FROM PAGE 1

friends from the Broad Ripple Village Association, the Meridian Kessler Neighborhood Association and elected officials such as State Representative Ed Delaney and Monroe Gray, our member of the Indianapolis City-County Council.

President Neil Bloede kicked the meeting off with a general welcome and a recap of key activities that BTNA has undertaken in 2010 including our first “tox drop” in partnership with Butler University and the City of Indianapolis as well as a renewed focus on increasing membership and attracting new board members. To that point Neil introduced three new board members to the neighborhood during the meeting: Ann Foster, Jeremy Stewart and Edward Merchant. Ann, Jeremy, and Edward will begin their two-year terms with the January 2011 meeting—look for more information on our new board members in an upcoming edition of the BTNA News.

Next, we debuted the 17-minute documentary “BTNA: The Early Years.” The documentary was filmed over the past three years, and included research of BTNA and other records and interviews with current and former residents. The project team included myself along with Todd Lothery, a BTN resident and excellent documentary filmmaker. To produce the film, Todd and I interviewed many people including former BTNA presidents, faith-based leaders, historians, and current and former residents about the history of the Butler-Tarkington neighborhood with a focus on how BTNA residents worked to build an integrated neighborhood that works through understanding and fellowship. Those featured in the documentary include:

- Former State Rep. Daisy Lloyd;
- Former BTNA president and member of the City/County Council Steve West;
- Second BTNA president Bill Cupp;
- Butler University history professor Dr. George Geib;
- Former St. Thomas parish priest Rev. William Munshower; and,
- Long-time neighborhood resident Naemah Jackson.

Todd and I appreciate the warm reception the film received

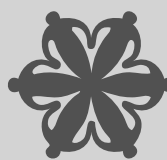


JOHN BARTH

State Representative Ed Delaney and City-County Councillor Monroe Gray take time to visit at BTNA's Annual Meeting.

and look forward to more feedback now that the documentary is available on-line at the BTNA website ([www.butlertarkington.org](http://www.butlertarkington.org)) and [youtube.com](http://youtube.com) (search for “BTNA”).

Many thanks to all the people who came out to support BTNA during our annual meeting. It was a great night of fellowship, memories, and thoughts for the future.



the news of our neighborhood • indianapolis, indiana

## Butler-Tarkington

[www.butlertarkington.org](http://www.butlertarkington.org)

### Editor in Chief

Carol Caldwell  
[carol61244@att.net](mailto:carol61244@att.net)

### Advertising Manager

Marilyn Porter  
[c.m.porter@att.net](mailto:c.m.porter@att.net)

### Page Layout

Chris W. Cotterill  
[chris.cotterill@gmail.com](mailto:chris.cotterill@gmail.com)

### BTNA Mission

To enhance neighborhood livability, to maintain open communication with state and local government and other neighborhoods and neighborhood associations, to involve neighbors in neighborhood activities, to eliminate prejudice and discrimination, to defend human and civil rights, and to combat juvenile delinquency.

### About the Newsletter

*The Butler-Tarkington* is the official newsletter of the Butler-Tarkington Neighborhood Association (BTNA) and is funded with BTNA membership fees and advertisements.

This newsletter exists to provide relevant news and diverse perspectives in and around our neighborhood.

### Letters to the Editor & Advertisements

To write for *The Butler-Tarkington*, please contact the editor in chief. For information about advertising, please contact the advertising manager.

Letters to the Editor are encouraged and should be sent to editor in chief.

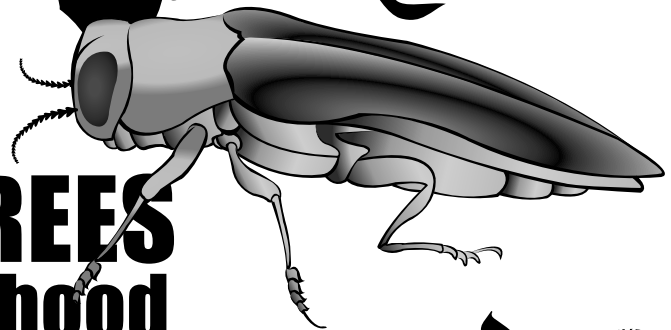


contact us for a free estimate

[www.pingtreeservice.com](http://www.pingtreeservice.com)

317-298-8482

The **EMERALD  
ASH BORER**  
is silently **KILLING TREES**  
in **YOUR neighborhood**



**Ping's can protect your Ash Trees with  
treatments that are friendly to children,  
pets, and the environment.**



**Certified Arborists Providing Comprehensive Professional  
Service for Your Trees & Properties**

Tree Care | Tree Removal | Insect & Disease Control | and More

*Visit us online for a full overview of our services!*



*35 Years Experience  
Impeccable Customer Service  
Highly-Awarded Arborists  
Fully Insured*



**T R E E R E M O V A L**

# Butler University President Dr. Bobby Fong to Become 13<sup>th</sup> President of Ursinus College

Dr. Bobby Fong, president of Butler University, recently announced his acceptance of the presidency at Ursinus College in Collegeville, Penn. Fong will continue to serve as Butler's president until the end of this academic year.

"I have been privileged to be associated with Butler through a decade of remarkable progress," Fong noted. "Ursinus sought a president to lead it in a strategic planning process, a comprehensive fundraising campaign, and an effort to raise its profile in the local community and nationally. Butler gave me experience in these areas. The invitation from Ursinus also takes me back to my roots in liberal arts colleges and to family on the east coast."

Founded in 1869, Ursinus

is a national liberal arts college of 1,700 students known for its innovative first-year program and senior capstone requirement. In common with Butler, it is on this year's U.S. News & World Report lists of 86 institutions with "an unusual commitment to undergraduate teaching" and 68 institutions nationally designated as "Top Up-and-Coming Schools" for having made the most promising and innovative changes in academics, faculty and student life.

Fong became the 20<sup>th</sup> president of Butler University on June 1, 2001. At the time he assumed the presidency he was one of only

20 Asian-American college presidents—representing 0.9 percent of higher education chief executives—in the country.



FONG

In his 10 years as Butler's president, Fong has led Butler University to unprecedented heights, including successive balanced budgets, two successful strategic planning processes, an endowment that has doubled in size, and record years for both the number of entering freshmen and fundraising. Additionally, the University experienced a significant expansion of student facilities, including a health and recreation complex, apartment-style housing, a diversity center, and an

addition for pharmacy and health sciences education.

Fong also provided leadership in a record-setting human capital campaign that raised \$154 million.

Under his leadership, Butler received its largest grants from the Lilly Endowment Inc.—\$22 million to launch the Butler Business Accelerator and \$25 million for the College of Pharmacy and Health Sciences Expansion Project (with a focus on public health).

When Fong came to Butler, total full-time enrollment was 3,442 students; in 2010, it was 4,042. Graduation rates grew from 62 percent to 73 percent in 2009, which placed Butler in the top 30 of the 572 master's universities in the United States.

The Original  
**CURLEY'S**  **CLEANERS**

**Butler-Tarkington's  
Neighborhood  
Cleaners Since 1955**

**3838 N. Illinois Street  
925-5335**

**5560 N. Illinois Street  
254-8795**

**10% Discount for BTNA Members**

**Same Day Service Available  
Same Day Saturdays @ 38<sup>th</sup> Street**

**For All Your Housing Needs...  
Choose Success!**

- Multi Million Dollar Sales Producer
- CRS - Certified Residential Specialist
- National Referral/Relocation Specialist
- Director, 8 yrs. Indiana Assoc. of REALTORS®
- Director, 3 yrs. Metropolitan Indpls. Board of REALTORS®
  - Former BTNA Board President
- Over 25 years of neighborhood knowledge
- 1995 MIBOR North side Division REALTOR® of the Year
  - Board Member, The REALTOR® Foundation
- 2001 Metropolitan Indpls. Board REALTOR® of the Year
- 2004 Womens Council of REALTORS® Regional V. Pres.
- 2005 WCR Indiana Member of The Year

**Robbie Williams**  
CRS GRI, LTG, PMN

**Century 21**  
Diversified Realty



**Office: (317) 585-7748 • Home: (317) 253-1222  
24 Hrs: (317) 328-6217 • Toll Free: (800) 572-1862**

# Welcome

North Church programs and ministries reach out to people in our neighborhood, our city, across the country, and around the world.

Our membership and leadership are diverse, drawn from many walks of life and we invite you to join us for worship any Sunday morning. Or call us for more information about our church and its activities.



Where Spiritual Journeys Meet

**NORTH UNITED METHODIST CHURCH**

Located on the northwest corner of 38th and Meridian Streets  
317 924-2612  
www.northchurchindy.org

Sunday Worship: 8:30 a.m. and 11:00 a.m.  
Sunday School: 9:45 a.m.



# BTNA MEMBERSHIP NIGHT AT HINKLE FIELDHOUSE

Butler-Tarkington Neighborhood Association and Butler University have partnered to offer BTNA members discounted prices for the Men's Basketball game versus Green Bay on January 21<sup>st</sup>. Discounted tickets are also available for the Women's Basketball game versus Milwaukee on January 29<sup>th</sup>. Those eligible to take advantage of this opportunity include 2010 BTNA members, as well as 2011 new and renewing members.

We encourage everyone taking advantage of this exclusive offer to submit their 2011 membership dues with the ticket application. *Completed ticket orders must be received by January 5, 2011.* Tickets will be available for pick up at the January 10<sup>th</sup> BTNA meeting.

We hope to see many of you at the game and Go Dawgs!



# BUTLER

## BTNA GROUP TICKET REQUEST FORM

### YOUR INFORMATION

Name: \_\_\_\_\_ Phone: \_\_\_\_\_

Address: \_\_\_\_\_ City: \_\_\_\_\_ State: \_\_\_\_\_

Zip: \_\_\_\_\_ Email: \_\_\_\_\_ BTNA Member:  current 2010  new for 2011

### SELECT GAME(S)

**MEN'S BASKETBALL VS. GREEN BAY** Adult: \$12 \_\_\_\_\_ Youth: \$7 \_\_\_\_\_ Total: \_\_\_\_\_  
Friday, Jan. 21, 2011 - 7 p.m.

**WOMEN'S BASKETBALL VS. MILWAUKEE** Adult: \$5 \_\_\_\_\_ Youth: \$3 \_\_\_\_\_ Total: \_\_\_\_\_  
Saturday, Jan. 29, 2011 - 2 p.m.

Make checks payable to BTNA

Mail to: Butler-Tarkington Neighborhood Association, P.O. Box 88234, Indianapolis, IN 46208

Contact Neil Bloede at neil.bloede@hotmail.com for more information on the event.

For more information on additional Butler Basketball group options, contact Pete Xander at pxander@butler.edu or 317-940-9671.

**Butler-Tarkington Neighborhood Association**

P.O. Box 88234 – Indianapolis, Indiana 46208

*Board of Directors*

John Barth  
jbarth53@hotmail.com

Chris Cotterill  
chris.cotterill@gmail.com

Tom Dolan  
tdolan@butler.edu

Larry Fitzgerald  
shrumhousing@sbeglobal.net

Nicole James  
njames@imcpl.org

*President* Neil Bloede  
neil.bloede@hotmail.com

*Vice-President* Ike Willett  
isaac.willett@bakerd.com

*Treasurer* John Countryman  
john.countryman@raymondjames.com

*Secretary* Catherine Clements  
cathclements@yahoo.com

JoAnn Johnson  
joann2007@aol.com

Mike Morgan  
mmorgan@butler.edu

Kevin Swiontek  
kswiontek@indy.rr.com

Brendan Teeley  
bpteeley@gmail.com

Non-profit Organization  
U.S. Postage Paid  
Permit No. 2869  
Indianapolis, IN



**PAGE 15: The Butler-Tarkington Neighborhood Association & Butler University have partnered to offer BTNA members discounted prices for the Men's Basketball game versus Green Bay on January 21<sup>st</sup>!**

# Programs & Hours Change at the Glendale & College Libraries

NICOLE JAMES  
BTNA BOARD MEMBER

The reduced public service hours for Library locations are now in effect. Changes to programs at the College and Glendale branches are listed below.

**COLLEGE AVENUE LIBRARY CHANGES**

Preschool Storytime is now Wednesday morning 10:30 a.m. Bunny Hugs Storytime remains Thursday morning at 10:30 (note that there will be no Storytimes from December 15<sup>th</sup> through January 13<sup>th</sup>). Youth Night is now the third

Tuesday of each month at 6:30 p.m. The Saturday afternoon Chess Club now meets at the Glendale Library. Please call 275-4320 for more information.

**GLENDALE LIBRARY CHANGES**

Baby Storytime is now Tuesday morning 10:30 a.m. Preschool Evening Storytime is now Wednesday evenings 6:45 p.m. Continuing Preschool Storytime is Thursday morning 10:30 a.m. Paws to Read times vary. Tuesday and Thursday computer classes remain at 9 a.m. Please call 275-4410 for more information.

	SUN	MON	TUE	WED	THUR	FRI	SAT
College	Closed	12-8	12-8	10-6	10-6	10-6	Closed
Glendale	12-5	12-8	10-6	12-8	10-6	Closed	10-6

## HOLIDAY OPEN HOUSE

**WHERE**

Merchants at 56<sup>th</sup> & Illinois St.

**WHEN**

December 2<sup>nd</sup> through December 4<sup>th</sup> during regular business hours

